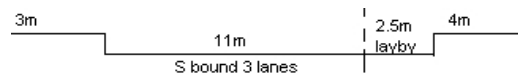
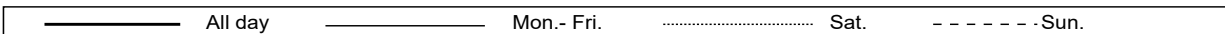
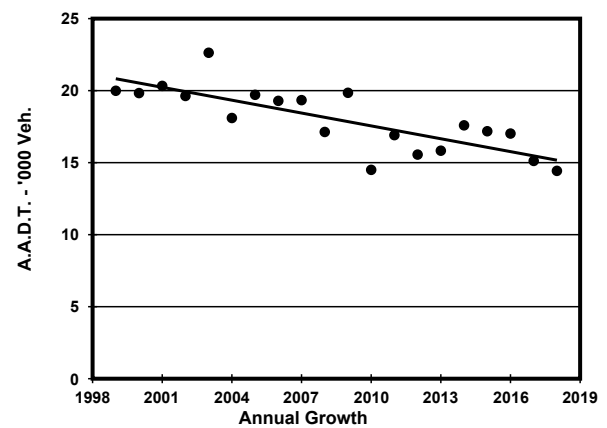
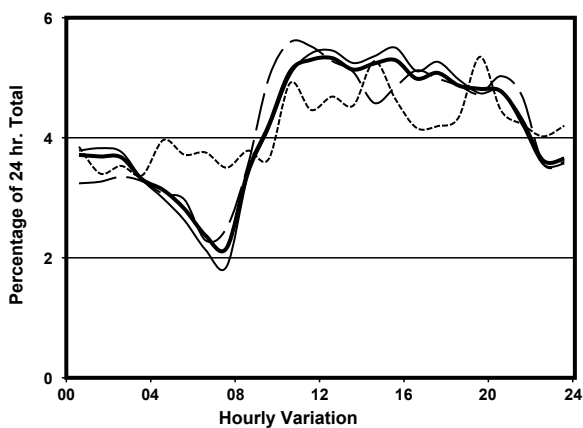
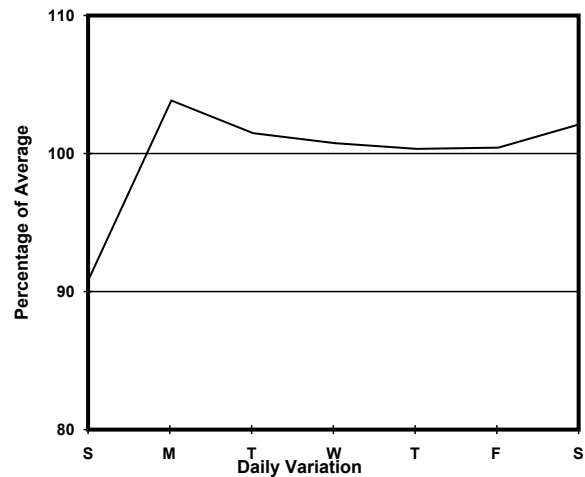
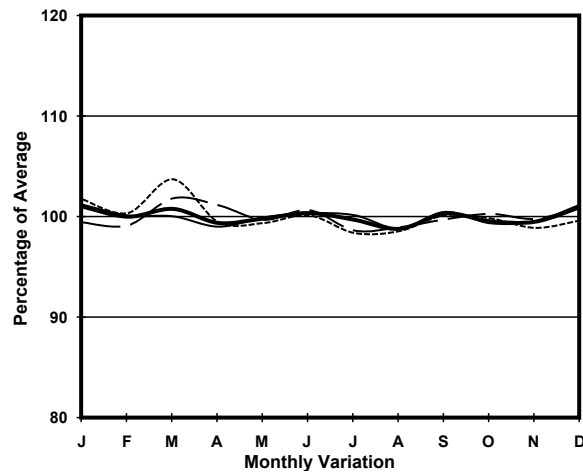


YEAR	2018	LINK	SHANGHAI ST (from ARGYLE ST to DUNDAS ST)
COVERAGE (B) STATION	4209		
ROAD NETWORK	MAJOR		
ROAD TYPE	DISTRICT DISTRIBUTOR		



1. TRAFFIC FLOW VARIATION AND GROWTH



2. TRAFFIC CHARACTERISTICS (BY DIRECTION)

Parameter	All - Day	Mon. - Fri.	Sat.	Sun.
SOUTH BOUND				
A.A.D.T.	14430	14690	14820	13200
R 12 / 24 - %	56.1	56.7	56.9	52.1
R 16 / 24 - %	73.6	74	74.9	70.2
AM Peak Hour	0900-1000	0900-1000	0900-1000	0800-0900
One-way flow at AM peak hour	610	610	740	500
T - % (AM)	-	8.4	-	-
PM Peak Hour	1700-1800	1700-1800	1600-1700	1800-1900
One-way flow at PM peak hour	730	770	760	570
T - % (PM)	-	2.4	-	-
Prop.of commercial vehicles - 16 hr.	-	4.5	-	-
 A.A.D.T.	-	-	-	-
R 12 / 24 - %	-	-	-	-
R 16 / 24 - %	-	-	-	-
AM Peak Hour	-	-	-	-
One-way flow at AM peak hour	-	-	-	-
T - % (AM)	-	-	-	-
PM Peak Hour	-	-	-	-
One-way flow at PM peak hour	-	-	-	-
T - % (PM)	-	-	-	-
Prop.of commercial vehicles - 16 hr.	-	-	-	-

3. OTHER INFORMATION AND COMMENT

4. Vehicle classification and occupancy - Monday to Friday

Time		Class of vehicle									
		Motor Cycle	Private Car	Taxi	Private LB	PLB	Goods veh.		Non Fr. Bus	Fr. Bus	
							Light	M & H		SD	DD
0700-0800	Pro	0.0	20.6	41.2	5.2	8.6	18.9	0.0	1.7	0.0	3.9
	Ocp	0.0	1.5	1.5	4.7	10.2	1.5	0.0	37.0	0.0	14.4
0800-0900	Pro	0.0	20.2	22.5	1.5	14.2	30.7	1.5	6.7	0.2	2.4
	Ocp	0.0	1.4	1.7	3.5	11.0	1.6	2.5	26.4	13.0	13.0
0900-1000	Pro	2.0	19.1	22.1	1.5	8.8	38.2	4.4	2.5	0.0	1.5
	Ocp	1.3	1.3	1.8	1.3	8.1	1.6	2.1	5.0	0.0	8.3
1000-1100	Pro	0.9	19.2	31.9	0.0	8.9	35.2	2.3	0.5	0.1	0.9
	Ocp	1.0	1.5	1.4	0.0	7.2	1.4	1.4	1.0	7.0	12.3
1100-1200	Pro	2.5	25.6	23.6	0.0	8.0	36.1	2.5	0.5	0.0	1.1
	Ocp	1.0	1.3	1.4	0.0	7.7	1.4	1.8	9.0	0.0	18.8
1200-1300	Pro	2.1	20.5	33.4	1.0	9.2	28.8	2.1	1.5	0.1	1.3
	Ocp	1.0	1.5	1.8	4.0	6.5	1.5	1.8	10.0	18.0	10.1
1300-1400	Pro	2.7	27.3	26.0	0.0	5.4	35.8	1.3	0.4	0.0	1.1
	Ocp	1.0	1.3	1.7	0.0	7.3	1.5	1.0	1.0	0.0	11.8
1400-1500	Pro	4.4	27.7	23.4	0.0	5.8	32.1	2.9	2.4	0.0	1.2
	Ocp	1.1	1.3	1.9	0.0	6.5	1.6	1.7	22.0	0.0	10.1
1500-1600 Peak hour	Pro	3.2	30.6	23.3	0.0	8.7	29.2	2.7	0.9	0.1	1.4
	Ocp	1.0	1.3	1.9	0.0	6.5	1.3	1.8	24.0	12.0	12.6
1600-1700	Pro	2.5	39.4	22.9	0.5	7.0	23.4	0.5	2.5	0.0	1.2
	Ocp	1.0	1.4	2.2	2.0	5.9	1.4	1.0	3.4	0.0	13.0
1700-1800	Pro	7.3	44.3	28.7	0.5	5.7	11.0	0.0	1.0	0.1	1.3
	Ocp	1.0	1.3	1.9	5.0	8.5	2.0	0.0	26.5	23.0	16.6
1800-1900	Pro	4.2	43.2	31.3	0.5	10.4	8.3	0.5	0.5	0.0	1.0
	Ocp	1.3	1.3	1.9	1.0	8.8	1.6	1.0	29.0	0.0	14.3
1900-2000	Pro	2.1	41.4	38.3	0.5	8.9	5.8	0.5	1.0	0.1	1.3
	Ocp	1.0	1.4	1.5	1.0	6.5	1.5	1.0	20.0	9.0	9.3
2000-2100	Pro	3.5	28.1	57.1	0.0	5.5	2.0	2.0	0.5	0.0	1.3
	Ocp	1.1	1.8	1.5	0.0	7.9	1.3	1.5	8.0	0.0	7.1
2100-2200	Pro	1.1	37.6	52.8	0.0	4.5	1.7	0.0	1.1	0.0	1.1
	Ocp	1.5	1.6	1.6	0.0	5.6	1.7	0.0	8.0	0.0	8.4
2200-2300	Pro	2.9	27.2	58.7	0.0	5.0	4.3	0.0	0.0	0.2	1.8
	Ocp	1.3	1.3	1.5	0.0	6.4	1.5	0.0	0.0	10.0	9.7
16 hours	Pro	2.8	30.0	32.6	0.5	7.7	22.1	1.6	1.4	0.1	1.4
	Ocp	1.1	1.4	1.7	3.0	7.6	1.5	1.7	16.1	13.1	11.8

Legend

Pro. Proportion of vehicles in % (Sum may not add up to 100% due to figure rounding)*

Ocp. Average occupancy of vehicles including both driver and passengers*

M&H Medium and Heavy

***** All traffic data are collected from combined bounds except for one way traffic